



ABSTRACT SUBMISSION:	01.02.2009
BURSARY APPLICATION:	01.02.2009
NOTIFICATION – ACCEPTANCE:	16.03.2009
WORKSHOP-PAPER SUBMISSION:	01.06.2009

AESOP PHD WORKSHOP 2009

The University of Manchester

11-14 July 2009

OVERVIEW

The Manchester AESOP PhD workshop aims to bring together PhD students from across Europe and elsewhere to share research ideas, findings and concerns in a friendly and supportive atmosphere. The workshop will be a mixture of small working groups and plenary sessions.

Six leading academics from around the world will act as facilitators to guide presentations and lead critical reflection by students, and to encourage discussion on major planning issues, theories and practices. The themes identified below will form part of the plenary presentations and panel discussion:

- Development, use and application of theoretical frameworks in planning research.
- Designing robust research strategies and choosing appropriate research methods.
- Developing a successful research career: communicating your research.

The workshop (as well as living accommodation) will be at the University of Manchester's Dalton Ellis Hall. Located in landscaped grounds, Dalton Ellis is well-served by frequent bus services to the city centre and the University, and a short walk from the lively 'curry mile' area of Rusholme.

Dalton Ellis Hall, Conyngham Road, Victoria Park, Manchester, M14 5RL, UK.
Tel: + 44 (0)161 224 3211

The fee for this workshop, including all accommodation, meals and the social programme, is 350 Euro (or £250). This fee also includes the registration fee* for the 2009 AESOP Congress in Liverpool which takes place immediately after the PhD workshop (*subject to satisfactory submission of completed paper).

6 full bursaries are available for application.

For further information of the Workshop, please email aesopphd2009@manchester.ac.uk



PROGRAMME

The workshop will run from Saturday 11th July to Tuesday 14th July 2009.

Workshop participants are requested to arrive at the Dalton Ellis Hall between 14:00-16:30 on Saturday 11th July 2009 for registration and room allocation.

Saturday 11 July		
14.00 – 16.30	Registration	Dalton Ellis Hall
17.00 – 19.15	Plenary I: <i>Welcome by Prof. Cecilia Wong</i> <i>Introduction: PhD students and mentors</i> brief presentation by Prof. Vincent Nadin	Dalton Ellis Hall
19.15 – 19.30	Walking to Rusholme	
19.30 – 21.00	Evening meal in the Curry Mile	Rusholme

Sunday 12 July		
09.00 – 10:00	Plenary II: presentation and discussion <i>Development, use and application of theoretical frameworks in planning research</i> Prof. Benjamin Davy	Dalton Ellis Hall
10:00 – 10.30	Coffee/Tea	Dalton Ellis Hall
10:30 – 12.45	Working groups: Session I: two student presentations	Dalton Ellis Hall
12.45 – 13.45	Lunch	Dalton Ellis Hall
13.45 – 16:00	Working groups: Session II: two student presentations	Dalton Ellis Hall
16.00 – 16.15	Coffee/Tea	Dalton Ellis Hall
16.15 – 19.00	Walking tour of Industrial and Postmodern Architecture of Manchester City Centre Dr. Andrew Crompton and Prof. Michael Hebbert	Manchester City Centre
19.00 – 21.00	Evening meal in China Town	China Town

Monday 13 July

09.00 – 10:00	Plenary III: presentation and discussion <i>Research strategy design</i> Dr. Michael Neuman	Dalton Ellis Hall
10:00 – 10.30	Coffee/Tea	Dalton Ellis Hall
10.30 – 12.45	Working groups: Session III: two student presentations	Dalton Ellis Hall
12.45 – 13.45	Lunch	Dalton Ellis Hall
13.45 – 15.45	Working groups: Session IV: group evaluation Coffee/Tea available from 14:45 onwards	Dalton Ellis Hall
15:45 – 20.00	Coach tour to the Peak District Adam Barker and Dr. Philip Bell	Peak District and Derbyshire
20:00 – 22:00	Young Academics social drink reception (with food)	Castlefield, Manchester

Tuesday 14 July

09.00 – 10.00	Plenary IV: presentation and discussion <i>Communicating and publishing your research</i> Prof. Rachelle Alterman	Dalton Ellis Hall
10:00 – 10:15	<i>Introduction of the Young Academics Network</i> Dr. Paul Benneworth	Dalton Ellis Hall
10:15 – 10:45	Coffee/Tea	Dalton Ellis Hall
10.45 – 12.45	Plenary V: <i>Evaluation of the workshop and concluding comments</i> Chaired by Prof. Michael Hebbert	Dalton Ellis Hall
12:45 – 13:45	Lunch and Departure	Dalton Ellis Hall

ACADEMIC MENTORS

Professor Rachelle Alterman

The David Azrieli Chair in Architecture and Town Planning, Technion Israel Institute of Technology.

Research interest: comparative land use and planning law, planning theory and method, public participation in planning, and implementation of public policy.

Professor Benjamin Davy

University Professor, Faculty of Spatial Planning, the University of Dortmund.

Research interest: theoretical aspects of property and urban planning; German and foreign land policy; and land management and negotiation.

Professor Michael Hebbert

Professor of Town Planning, School of Environment and Development, University of Manchester.

Research interest: history of town planning, regionalism, municipalism, urbanism, urban design, and railway station design.

Professor Vincent Nadin

Professor of Spatial Planning and Strategy, Technical University of Delft.

Research interest: Europeanisation of spatial development and planning, cross-national comparative spatial planning systems and the role of spatial planning in delivering more environmental sustainability.

Dr. Michael Neuman

Associate Professor of Urban Planning, Department of Landscape Architecture & Urban Planning, Texas A&M University.

Research interest: the integration of design, planning and governance for sustainability; infrastructure planning and design, sustainable urbanism, urban and regional design, metropolitan and regional planning, planning theory, and institutions and institutional theory.

Professor Cecilia Wong

Professor of Spatial Planning, School of Environment and Development, University of Manchester.

Research interest: policy monitoring and evaluation; quantitative measures and indicators; and spatial planning methodology.

ORGANISING COMMITTEE

The workshop is hosted by the Centre for Urban Policy Studies (CUPS) within the School of Environment and Development at the University of Manchester. CUPS was established by Professor Brian Robson in 1983 to develop research on urban and regional policy. Professor Cecilia Wong is currently the Executive Director of CUPS. CUPS has an established reputation for policy-relevant research on the evaluation of area-based urban policy initiatives, regional development, spatial planning and housing, and the measurement of neighbourhood dynamics.

Committee

Cecilia Wong (Chair), Professor of Spatial Planning, Centre for Urban Policy Studies, School of Environment and Development, University of Manchester.

Mark Baker, Senior Lecturer in Planning Policy and Practice, Centre for Urban Policy Studies, School of Environment and Development, University of Manchester.

Adam Barker, Lecture in Spatial Planning, Centre for Urban and Regional Ecology, School of Environment and Development, University of Manchester.

Philip Bell, Lecturer in Rural Planning, School of Environment and Development, University of Manchester.

Paul Benneworth, AESOP Young Academics Network, Research Fellow, School of Architecture, Planning and Landscape, University of Newcastle upon Tyne.

Rocco Bubbico, PhD student, Centre for Urban and Regional Ecology, School of Environment and Development, University of Manchester.

Andrew Crompton, Lecturer in Architecture, Manchester Architecture Research Centre, School of Environment and Development, University of Manchester.

Iain Deas, Head of Planning, Senior Lecturer in Urban and Regional Policy and Planning, Centre for Urban Policy Studies, School of Environment and Development, University of Manchester.

Ruth Foo, PhD student, Centre for Urban and Regional Ecology, School of Environment and Development, University of Manchester.

Michael Hebbert, Professor of Town Planning, Manchester Architecture Research Centre, School of Environment and Development, University of Manchester.

Administrative Support

Debra Whitehead, Research Administrator, School of Environment and Development, University of Manchester.



GUIDELINES FOR ABSTRACTS

PhD students wishing to participate in the workshop will be required to submit an abstract and a letter of introduction.

The **abstract** (maximum 500 words) submitted in the format of the Workshop's style sheet should include:

- Aims and objectives of the research.
- A brief outline of the conceptual framework underpinning the research, the methodology employed and (where appropriate) a summary of the key empirical findings.

The **letter of introduction** should outline:

- The stage you have reached in the PhD process (note: students in the middle stages of the PhD process will be given priority as they will benefit most from the workshop guidance).
- Whether you have previously participated in an AESOP PhD workshop.
- What you hope to gain from participation in the PhD workshop.

The abstract and the letter of introduction must be uploaded on the AESOP Young Academics Network Website (<http://www.aesop-youngacademics.net/mediacenter.php?idcat=10>, folder *Workshop Abstracts 2009*) by **1st February 2009** at the latest.

Selected participants will be notified at the latest by **16th March 2009**.

GUIDELINES FOR FULL WORKSHOP PAPERS

Full papers must not exceed 5,000 words (excluding references).

The participant's full paper as well as their presentation during the workshop should focus on one or more of the following:

- Key conceptual, methodological and empirical elements of their PhD.
- Major obstacles encountered in developing research, and advice for others.
- Relevance to planning literature and contribution to knowledge.

Participants should also state the areas of which they would like the discussion to focus.

Full papers must be uploaded on the Young Academics Network Website (<http://www.aesop-youngacademics.net/mediacenter.php?idcat=10>, folder *Workshop Papers 2009*) by **1st June 2009**.

Note: For participants who submitted their full papers by the 1st June 2009, they can also attend the full AESOP Congress at Liverpool, 15 -18 July 2009, without paying extra Congress Fee. Deadline of abstract submission of the AESOP Congress is 12th January 2009.

GUIDELINES FOR WORKSHOP PRESENTATIONS

The workshop will be a mixture of small working groups and plenary sessions. Groups of 6 students will be assigned to a working group and allocated a mentor by 1st June 2009. The group allocation will be based on the substantive area of the research topics.

In these small working groups, each participant will have a 1 hour slot in which to present their research (with a maximum of 30 minutes allowed for presentation) followed by informal discussion and feedback (also limited to 30 minutes).

Presentations must be uploaded on the AESOP Young Academics Network Website (<http://www.aesop-youngacademics.net/mediacenter.php?idcat=10>, folder *Workshop Presentations 2009*) by **6th July 2009**.

WORKSHOP PARTICIPATION

The workshop requires active participation during the four days. In addition, participants will be asked to:

- Read the full papers of participants in their working group in advance of the workshop and to identify points for discussion and clarification.
- Act as a referee for one other student in their group and provide detailed feedback. The student referee will be assigned by 1st June 2009, the same time when assigning the working groups.

FEES AND PAYMENT

The workshop fee (including all sessions and meals) is €350 (or £250).

For participants who submitted their full papers by the 1st June 2009, they can also attend the AESOP Congress at Liverpool (15 -18 July 2009) without paying extra Congress Fee. Deadline of abstract submission of the AESOP Congress is 12th January 2009.

Payment has to be made by **10th June 2009**, and late payment will lead to a handling charge of extra 10%.

Payment methods

By cheque is the easiest payment method for those with a British Bank Account. Please make the cheque of £250 payable to '**The University of Manchester**' and send to Debra Whitehead, School of Environment and Development, University of Manchester, 2nd Floor Arthur Lewis Building, Oxford Road, Manchester, M13 9PL, UK.

By Credit Card (no American Express) or Invoice – this can be done by first contacting Debra Whitehead via e-mail: debra.whitehead@manchester.ac.uk

NO cash should be mailed to us!!



AESOP / YA BURSARIES

5 BURSARIES (provided by AESOP) dedicated to cover the Ph.D Workshop Fee will be assigned in a jointly selection process organised between AESOP, the AESOP Young Academics Network and the University of Manchester.

All applicants for the event must supply an **ABSTRACT** and a **LETTER OF INTRODUCTION** (which have to be uploaded on the AESOP Young Academics Website)

PhD students wishing to apply for a AESOP / YA Bursary will be required to submit a more detailed **RESEARCH OUTLINE** (max. 3.000 words) as well as a **RECOMMENDATION LETTER** from their supervisor. Complete Bursary Applications must be uploaded on the AESOP Young Academics Network Website (<http://www.aesop-youngacademics.net/mediacenter.php?idcat=10>, folder *Bursary Applications 2009*) as well as submitted via e-mail to Beatrix Haselsberger; haselsberger@email.archlab.tuwien.ac.at.

All applications received by **1st February 2009** will be considered for the bursary. Bursary winners will be announced at the same time as accepted participants are notified.

Successful applicants will be exempted from the payment of the PhD Workshop Fee.

Evaluation criteria

The bursaries will be given in preference to eligible candidates (see below) coming from Central and Eastern Europe. If more than five candidates qualify, then a maximum of five will be selected on the basis of the quality of the submitted materials and with regard to geographical balance of participants.

Successful applicants must notify Beatrix Haselsberger about their travel arrangements, and upload the full version of their paper to the AESOP Young Academics Website by 1st June 2009 (this ensures the participants also qualify for the fee waiver for the 2009 AESOP Congress at Liverpool).

Eligibility

- Applicants must be PhD students registered at a Central or Eastern European country;
- Applicants must be a Member of the AESOP YA Network (membership free of charge, register at: <http://www.aesop-youngacademics.net/>).

Jury

Beatrix **Haselsberger** (Vienna University of Technology, Austria) - CHAIR
Beata **Banachowitz** (Lodz University, Poland)
Paul **Benneworth**, Young Academics Network (Newcastle University, GB)
Maros **Finka** (Slovak University of Technology, Slovakia)
Michael **Hebbert** (Manchester University, GB)
Cecilia **Wong** (Manchester University, GB)

Contact

For further information or for queries, contact Beatrix Haselsberger, haselsberger@email.archlab.tuwien.ac.at



TOWN PLANNING REVIEW BURSARY

1 BURSARY (provided by the Journal, Town Planning Review) dedicated to cover the PhD Workshop Fee will be assigned in a jointly selection process organised between the AESOP Young Academics Network and the University of Manchester.

All applicants for the event must supply an **ABSTRACT** and a **LETTER OF INTRODUCTION** (which have to be uploaded on the AESOP Young Academics Website)

Ph.D students wishing to apply for the Town Planning Review Bursary will be required to submit a more detailed **RESEARCH OUTLINE** (max. 3.000 words) as well as a **RECOMMENDATION LETTER** from their supervisor. Complete Bursary Applications must be uploaded on the AESOP Young Academics Network Website (<http://www.aesop-youngacademics.net/mediacenter.php?idcat=10>, folder *Bursary Applications 2009*) as well as submitted via e-mail to Paul Benneworth; paul.benneworth@ncl.ac.uk.

All applications received by **1st February 2009** will be considered for the bursary. The bursary winner will be announced at the same time as accepted participants are notified.

Successful applicants will be exempted from the payment of the PhD Workshop Fee.

Evaluation criteria

The bursary will be given in preference to an eligible candidate (see below) selected on the basis of the quality of the submitted material and with regard to geographical balance of participants.

Successful applicants must notify Paul Benneworth about their travel arrangements, and upload the full version of their paper to the AESOP Young Academics Website by 1st June 2009 (this ensures the participants also qualify for the fee waiver for the 2009 AESOP Congress at Liverpool).

Eligibility

- Applicants must be Ph.D. students;
- Applicants must be a Member of the AESOP YA Network (membership free of charge, register at: <http://www.aesop-youngacademics.net/>);

Jury

David **Massey** (Liverpool University) - CHAIR
Paul **Benneworth**, Young Academics Network (Newcastle University, GB)
Michael **Hebbert** (Manchester University, GB)
Cecilia **Wong** (Manchester University, GB)

Contact

For further information or for queries, contact Paul Benneworth, paul.benneworth@newcastle.ac.uk



VENUE AND ACCOMMODATION

Both the workshop sessions and the living accommodation will be at **Dalton Ellis Hall**, Conyngham Road, Victoria Park, Manchester, M14 5RL, UK. (Tel: + 44 161 224 3211).

The accommodation in Dalton Ellis Hall is single room with en suite bathroom facilities. The Hall has various facilities for the residents including library for study, reference works and light reading material and a computing room for those who do not have their own PCs or wish to access the University Information Systems or the internet. Breakfasts and evening meals are served each week-day, as well as breakfast and lunch on Saturday and Sunday. The Hall has a good reputation for food, with a choice of menu for most main meals and vegetarians. Other facilities include a squash court, courts for tennis, five-a-side football and netball, a snooker room and table tennis tables. Croquet is a popular summer activity on the Hall's large main lawn.

Dalton Ellis Hall, located in Victoria Park, was founded by the Quakers in 1876, and was named after John Dalton, a scientist and Quaker in the city, as an accommodation for students from a Quaker background attending the Owens College, the forerunner to the University of Manchester. The hall moved to the building currently used as Dalton Ellis's Main Hall in 1881. The building, designed by G. T. Redmayne, was the *first purpose built hall of residence* in England. In 1892 the large Victorian house now known as Eaglesfield was bought to increase the hall's capacity. Dalton Hall became a university hall of residence in 1958.



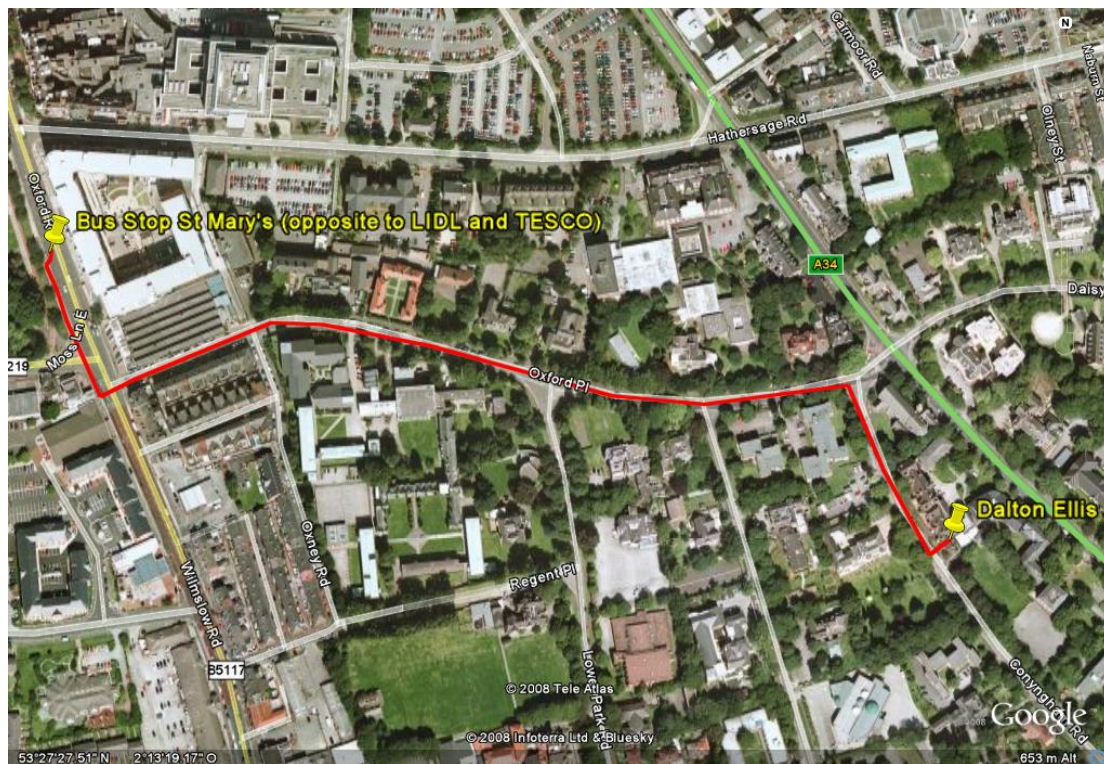
TRAVEL

From Manchester Airport to Dalton Ellis Hall

By Bus

The least expensive way from Manchester airport to Dalton Ellis Hall is by Stagecoach 43. You need to alight at the bus stop of St Mary's Hospital, opposite TESCO and Lidl. The bus ride will take approximately 45 minutes.

Once you get down from the bus, you have to walk around 500 metres to get to Dalton Ellis Hall. You have to get to the intersection of Wilmslow Road and Rusholme Place which becomes Oxford Place after some walk. Then, you have to turn right into Conyngham Rd (fourth street on the right). Dalton Ellis is the second building on the left. The reception is behind the black gate on the left. The direction is coloured 'red' in the map below.



By Rail then Bus

You can also take a train from Manchester airport to Manchester Piccadilly station. There are up to 6 trains in an hour that bring you from Manchester airport to Manchester Piccadilly station in the city centre. You can find out more information from these websites:

www.nationalrail.co.uk

www.tpexpress.co.uk

www.northernrail.org

From Manchester Piccadilly station, you can then walk to Piccadilly Gardens to catch Stagecoach 50 and alight at the bus stop of Victoria Hall, Anson Road. Dalton-Ellis is just few steps away. The time table of the Stagecoach is available in this link:

<http://www.stagecoachbus.com/timetables/Service05031Aug08.pdf>.

Alternatively, you can take bus 42, 43, 142 or 143 which will take you to Oxford Road. You will then alight at the bus stop in front of St Mary's Hospital and walk to Dalton-Ellis Hall using the map above. The walk will take about 5-10 minutes only.

By Coach then Bus

You can also travel from Manchester airport to Manchester City Centre with National Express Coach. More information is available in www.nationalexpress.com. When you arrive at the National Express Coach station in Sackville Street, you can walk to Portland Street to get buses 42/43/142/143 (close to the Portland Tower) on the direction of Fallowfield. You then have to alight at the St Mary's Hospital along Oxford Road (close to LIDL and TESCO) and walk to Dalton-Ellis Hall using the map above. The walk will take about 5-10 minutes only.

By Taxi

You can also take a black cab from Manchester airport to Dalton-Ellis Hall. It costs about £12 - £15.

From London to Manchester

By Train

You can check out train time and fare from the National Rail website (Tips: it is always much cheaper to buy your train tickets at least 2 weeks in advance of travel and make sure that you board on the train that you have booked. If you board on the train that you have not booked, you are subject to pay the full standard fare). <http://nationalrail.co.uk/>. It takes about 2-3 hours from London to Manchester by rail.

From Manchester Piccadilly station, you can then walk to Piccadilly Gardens to catch Stagecoach 50 and alight at the bus stop of Victoria Hall, Anson Road. Dalton-Ellis is just few steps away. The time table of the Stagecoach is available in this link:

<http://www.stagecoachbus.com/timetables/Service05031Aug08.pdf>.

Alternatively, you can take bus 42, 43, 142 or 143 which will take you to Oxford Road. You will then alight at the bus stop in front of St Mary's Hospital and walk to Dalton-Ellis Hall using the map above. The walk will take about 5-10 minutes only.

By Coach

You can also take a coach from London to Manchester with National Express (www.nationalexpress.com) or Megabus (<http://www.megabus.com/uk/>). The coach journey will take about 4-5 hours. However, there is £1 fare available for one way travel, occasionally.

When you arrive at the National Express Coach station in Sackville Street, you can walk to Portland Street to get buses 42/43/142/143 (close to the Portland Tower) on the direction of Fallowfield. You then have to alight at the St Mary's Hospital, along Oxford Road and close to LIDL and TESCO, and walk to Dalton-Ellis Hall using the map above. The walk will take about 5-10 minutes only.

From Dalton Ellis Hall to Liverpool (AESOP Congress 15-18 July 2009)

It is very convenient to travel from Manchester to Liverpool. You can take a bus from Dalton Ellis Hall to Piccadilly Gardens and then travel to Liverpool with either National Express Coach or Rail.

TRAVEL TO MANCHESTER AND THE ACCOMMODATION

If you like to extend your stay in Manchester, you can find more travelling and accommodation information in <http://www.visitmanchester.com/> and also more on getting around in Manchester in www.gmpte.com

BUDGET AIRLINES TO MANCHESTER AND LIVERPOOL

Manchester Airport

Manchester Airport is one of the biggest international airports in the UK and is served by a few budget carriers such as Jet2, Flybe, Brussels Airlines, Air Berlin, TUIfly, Ryanair, BMIbaby, Easyjet, and Monarch.

Liverpool Airport

Flying into Liverpool and get a direct bus from Liverpool Airport to Manchester City Centre (Sackville Street) is another option, especially if you want to attend the main conference and you want to buy a return ticket. There are two frequent coach services served by Terravision coach (www.terravision.eu) which runs between Liverpool Airport-Manchester City at £8 return and also bus No.700 operated by Arriva, (www.arriva.co.uk) at £12 pounds return. Liverpool airport is served by Ryanair, Easyjet and Wizzair. Once you get to Sackville Street, you can walk to Portland Street to get buses 42/43/142/143 (close to the Portland Tower) on the direction of Fallowfield. You then have to alight at the St Mary's Hospital, along Oxford Road and close to LIDL and TESCO, and walk to Dalton-Ellis Hall using the map above. The walk will take about 5-10 minutes only.

